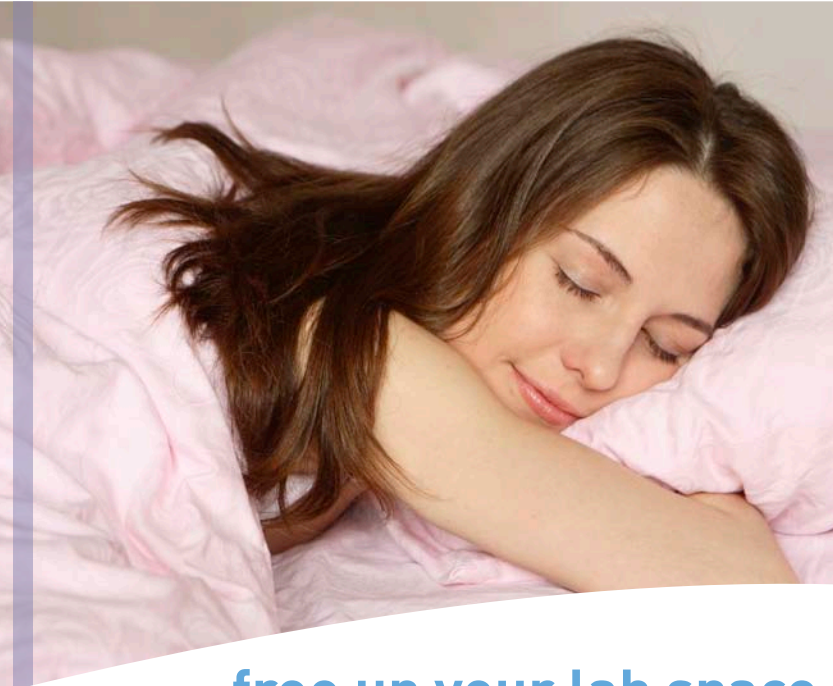


SleepScout™

Portable Sleep Monitor

Simplify the Monitoring
of Sleep Disorders



free up your lab space
for more complex patients

increase patient volume
without increasing lab space
(home and inpatient testing)

quicker diagnosis leads to
rapid patient
treatment

The SleepScout system is a **Type III**, 9-channel **wireless** home sleep monitor for assessing sleep-disordered breathing and periodic leg movements outside of the traditional sleep lab, such as in a patient's home or a hospital setting. SleepScout is ideal **for unattended studies** using a removable SD memory card **or for attended studies** using an upgrade accessory.

Combined with sophisticated software, SleepScout allows for **sleep disorders monitoring anytime, anywhere.**



Surpasses AASM Portable
Monitoring Guidelines

9 Input Channels

- 7 dedicated channels
 - Pulse Oximetry
 - Airflow (pressure based)
 - Snore (derived from airflow)
 - Thoracic Effort
 - Abdominal Effort
 - Body Position
 - Auxiliary DC (thermistor, blood pressure, etc.)

2 additional channels

- ECG & EMG or EEG & ECG

CleveMed

Cleveland Medical Devices Inc.

SleepScout's wireless design, ease of use, and small, handheld size make it the ideal option for unattended sleep studies or for hospital inpatient diagnosis.

SleepScout is unlike other home sleep monitors currently on the market.

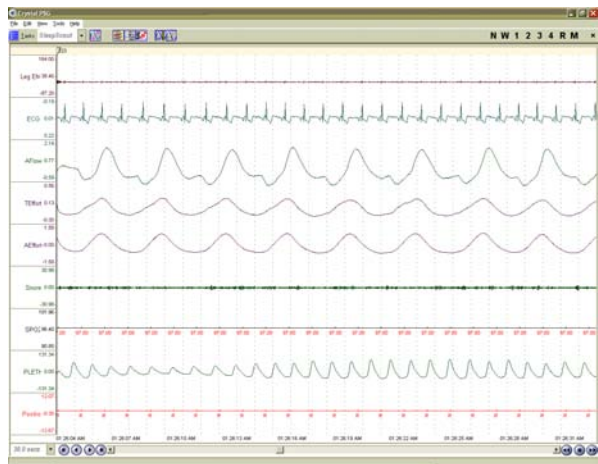
- Records conventional physiological signals - no unfamiliar waveforms to learn.
- Removable memory card for faster data download and shorter turnover time.
- Different SleepScout models allow you to choose the system that best meets your needs (ECG & EMG or EEG & ECG).
- A differential pressure transducer allows for CPAP titration studies.
- SleepScout's extended battery life allows for **multi-night studies** for improved confirmation of sleep-disordered breathing and for assessment of overall CPAP compliance and effectiveness.
- SleepScout's **wireless technology** for **real-time data transmission** to any PC allows for easy confirmation of proper electrode placement and permits attended monitoring for hospital room sleep studies - no patient tethering (upgrade accessory).
- Auxiliary DC input allows for additional sensors such as a thermistor, blood pressure and more for expanded monitoring.



Patient Unit	
Dimensions:	4.6" x 2.7" x 1.0" (11.7 cm x 6.9 cm x 2.5 cm)
Weight:	6.7 oz (190 g) (approx.) with batteries
Power:	2 AA lithium batteries, 23 hrs continuous use
Memory:	Removable SD memory card

Wireless Upgrade:

Computer Unit	
Weight:	7.1 oz (200 g)
Power:	USB
PC Interface:	USB
Operating Frequency:	2.4 – 2.484 GHz ISM band
Data Transmission Range:	100 feet (30 m) line of sight (approx.)



SOFTWARE

The SleepScout system includes CleveMed's proprietary Crystal PSG™ software, the same sophisticated software used with the Crystal Monitor® PSG series (20-B and 20-S) and Sapphire PSG™, allowing you to use one software package for both attended and unattended sleep studies in the sleep lab, patient's home or hospital. The Crystal PSG software offers a complete and powerful software package for managing patient data, data acquisition, scoring and reporting. This user friendly software offers quick and easy system setup, as well as simple and convenient patient and study management.

SleepScout – yet another solution from CleveMed for expanding the reach of your sleep services.

SleepScout, Sapphire PSG and Crystal PSG are trademarks and Crystal Monitor is a registered trademark of Cleveland Medical Devices Inc., Cleveland, OH.

Acknowledgments: This work was supported by Small Business Innovation Research grants from the National Institutes of Health (NINDS, NHLBI, NIMH).

Caution: Federal law restricts this device to sale by or on the order of a physician only.